

ALTO 1

THE CONTINENTAL

INTRO

MED SWING

$\text{♩} = \text{♩}$

x4

A handwritten musical score for 'The Continental - Alto 1'. The score is written on ten staves, each beginning with a treble clef and a key signature of two sharps (F# and C#). The notation includes various rhythmic values, slurs, and dynamic markings. A circled 'F' is present on the fourth staff, and a circled '4' appears on the eighth and ninth staves. The piece concludes with a double bar line and a large 'X4' written on the tenth staff. The handwriting is in black ink on white paper.

THE CONTINENTAL - ALTO 1  
Pg. 2

TENOR 1

INTRO

MED BANG

11=1.1

Handwritten musical notation on a five-line staff, featuring a treble clef, a key signature of two sharps (F# and C#), and a 4/4 time signature. The notation includes various rhythmic values and accidentals.

Handwritten musical notation on a five-line staff, continuing the piece with rhythmic patterns and accidentals.

Handwritten musical notation on a five-line staff, including a circled letter 'A' above the staff, indicating a specific section or measure.

Handwritten musical notation on a five-line staff, featuring a treble clef, a key signature of two sharps, and a 4/4 time signature.

Handwritten musical notation on a five-line staff, including a circled letter 'B' above the staff.

Handwritten musical notation on a five-line staff, featuring a treble clef, a key signature of two sharps, and a 4/4 time signature.

Handwritten musical notation on a five-line staff, including a circled letter 'C' above the staff.

Handwritten musical notation on a five-line staff, featuring a treble clef, a key signature of two sharps, and a 4/4 time signature.

Handwritten musical notation on a five-line staff, including a circled letter 'D' above the staff.

Handwritten musical notation on a five-line staff, featuring a treble clef, a key signature of two sharps, and a 4/4 time signature. The word 'KEY!!' is written to the right of the staff.

Handwritten musical notation on a five-line staff, including a circled letter 'E' above the staff and the text 'KEY OF G' CONCERT' written below the staff.

Handwritten musical notation on a five-line staff, featuring a treble clef, a key signature of two sharps, and a 4/4 time signature.

Handwritten musical score for tenor voice, page 2 of "The Continental". The score consists of 11 staves of music in G major (one sharp). The notation includes various rhythmic values, slurs, and dynamic markings. A circled "F" is present on the fourth staff. The piece concludes with a double bar line and a circled "4" on the eleventh staff.

TENOR 2

THE CONTINENTAL

MED SWING

$\text{♩} = \text{♩}$

INTRO

Handwritten musical notation on a five-line staff, starting with a treble clef and a key signature of two sharps (F# and C#). The notation includes a series of eighth and quarter notes.

Handwritten musical notation on a five-line staff, continuing the melody with eighth and quarter notes.

Handwritten musical notation on a five-line staff, featuring a circled letter 'A' above the staff and a long horizontal line indicating a rest.

Handwritten musical notation on a five-line staff, continuing the melody with eighth and quarter notes.

Handwritten musical notation on a five-line staff, continuing the melody with eighth and quarter notes.

Handwritten musical notation on a five-line staff, featuring a circled letter 'B' above the staff and a long horizontal line indicating a rest.

Handwritten musical notation on a five-line staff, continuing the melody with eighth and quarter notes.

Handwritten musical notation on a five-line staff, featuring a circled letter 'C' above the staff and a long horizontal line indicating a rest.

Handwritten musical notation on a five-line staff, continuing the melody with eighth and quarter notes.

Handwritten musical notation on a five-line staff, continuing the melody with eighth and quarter notes.

KEY!!

Handwritten musical notation on a five-line staff, featuring a circled letter 'D' above the staff and the text 'G' CONCERT' written above the staff.

Handwritten musical notation on a five-line staff, continuing the melody with eighth and quarter notes.

A handwritten musical score for 'The Continental - Tender 2'. The score consists of 11 staves of music, all in the key of D major (two sharps). The notation includes various rhythmic values, slurs, and ties. A circled 'F' is written above the fourth staff. The seventh and eighth staves contain heavy scribbles, likely indicating corrections or deletions. The piece concludes with a double bar line and a circled '4' on the eleventh staff. Below the staves are two empty staves.

THE CONTINENTAL - TENDER 2

Pg. 2

BARI

(INTRO)

MED. SWING

THE CONTINENTAL

$\text{♩} = 5.7$

KEY!!

A handwritten musical score for the piece "The Continental" on baritone. The score is written on ten staves. The key signature is three sharps (F#, C#, G#) and the time signature is 4/4. The notation includes various rhythmic values such as eighth and sixteenth notes, rests, and dynamic markings like accents (>) and a circled 'f'. There are also some handwritten annotations, including a circled 'F' on the third staff and a circled 'P' on the eighth staff. The score concludes with a double bar line on the tenth staff.

THE CONTINENTAL - BARITONE  
Pg. 2



# BONE 1

## THE CONTINENTAL MED-SLANG 1) = 1)

INTRA

(A)

(B) p

(D)

(E) G CONCERT

e b e g e b e h e h e # e KEY!!

Handwritten musical score for "The Continental" on page 1. The score consists of 11 staves of music in G major (one sharp). The notation includes various chords, melodic lines with slurs, and dynamic markings such as "Dim." and "p". There are some corrections and annotations, including a circled "F" and circled chord symbols like "(#)" and "(b)". The music ends with a double bar line on the 11th staff.

THE CONTINENTAL - TRM 1

BONE 2

THE CONTINENTAL  
MED-SANG

INTRO

(A)

(B)

(C)

(D)

(E) CONCERT

A handwritten musical score for a trombone part, titled "THE CONTINENTAL - TROM 2". The score is written on ten staves. The first staff begins with a treble clef and a key signature of one sharp (F#). The music consists of various rhythmic patterns, including eighth and sixteenth notes, often beamed together. There are several measures with rests. The notation includes slurs, accents, and some dynamic markings. The score ends with a double bar line. Below the main score, there are three empty staves.

THE CONTINENTAL - TROM 2

BONE 3  
INTRO

MED SWING THE 17=17 CONTINENTAL

3

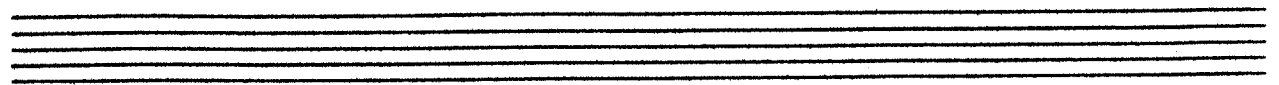
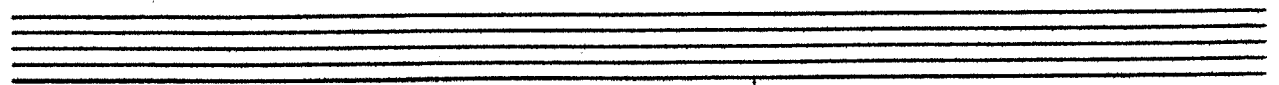
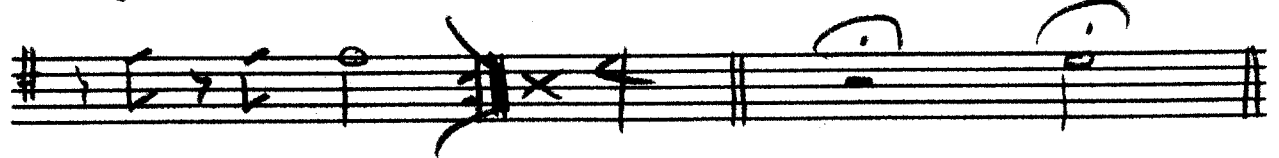
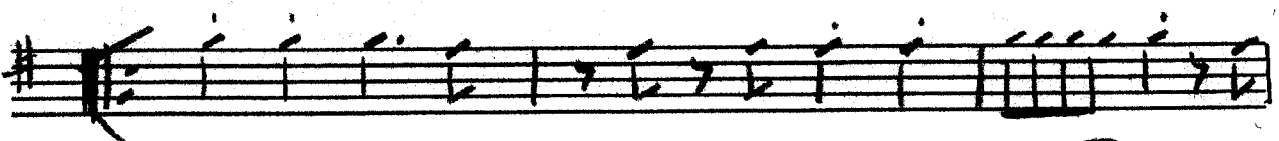
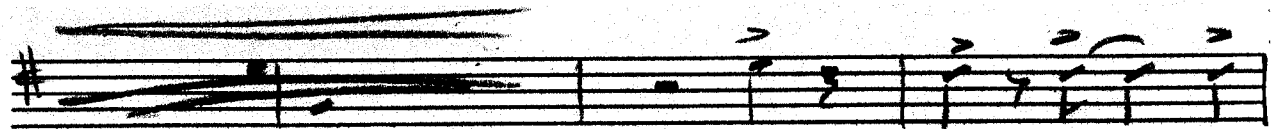
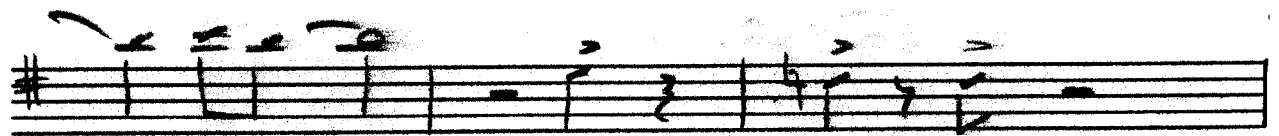
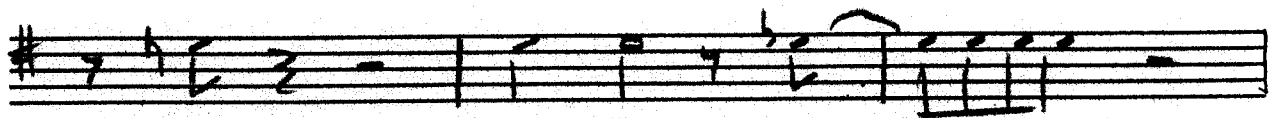
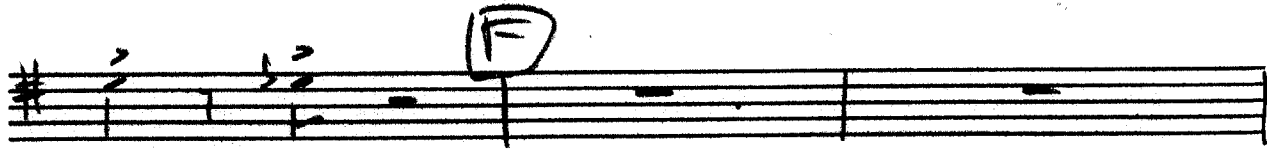
A

B

C

D

E 6/8 CONCERT



THE CONTINENTAL - TRM 3.  
Pg 2

TRUMPET |

MED. SWING THE CONTINENTAL

INTRO

MUTES IN

MUTES OUT

KEY!

Handwritten musical score for "The Continental - Part 1" on page 2. The score is written in G major (one sharp) and 4/4 time. It consists of ten staves of music. The notation includes various rhythmic patterns, slurs, and dynamic markings. A circled "7" is written in the left margin of the third staff. The piece concludes with a double bar line on the tenth staff.

THE CONTINENTAL - PART 1  
Pg. 2



TRUMPET 2

THE CONTINENTAL  
MED-SANG

INTRO

MUTES IN

MUTES OUT

KEY!!

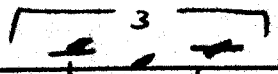
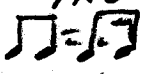
Handwritten musical score for "The Continental" - Part 2. The score consists of 10 staves. The first staff has a treble clef and a 4/4 time signature. The key signature is D major (two sharps). The notation includes various rhythmic values, accidentals, and dynamic markings. A circled 'D' is written above the third staff. The piece concludes with a double bar line and a circled 'X' on the tenth staff.

TRUMPET 3

THE CONTINENTAL

INTRO

MED-SWING



Handwritten musical notation for the first system, including a treble clef, key signature of two sharps (F# and C#), and a 3/4 time signature. It features a series of notes with slurs and a triplet of eighth notes.

MUTES IN

Handwritten musical notation for the second system, showing a whole rest with the instruction 'MUTES IN' written above it.

Handwritten musical notation for the third system, featuring a treble clef, key signature of two sharps, and a 3/4 time signature. It contains a rhythmic pattern of eighth and quarter notes.

Handwritten musical notation for the fourth system, showing a whole rest.

B

Handwritten musical notation for the fifth system, featuring a treble clef, key signature of two sharps, and a 3/4 time signature. It contains a rhythmic pattern of eighth and quarter notes.

MUTES OUT

Handwritten musical notation for the sixth system, showing a whole rest with the instruction 'MUTES OUT' written above it.

C

Handwritten musical notation for the seventh system, showing a whole rest.

D

Handwritten musical notation for the eighth system, featuring a treble clef, key signature of two sharps, and a 3/4 time signature. It contains a rhythmic pattern of eighth and quarter notes. A handwritten note 'KEY!!' is written to the right of the staff.

5' CONCERT

Handwritten musical notation for the ninth system, featuring a treble clef, key signature of two sharps, and a 3/4 time signature. It contains a rhythmic pattern of eighth and quarter notes.

Handwritten musical notation for the tenth system, showing a whole rest.

Handwritten musical notation for the eleventh system, featuring a treble clef, key signature of two sharps, and a 3/4 time signature. It contains a rhythmic pattern of eighth and quarter notes.

Handwritten musical score for trumpet 3, featuring a key signature of two sharps (F# and C#) and a 4/8 time signature. The score consists of seven staves of music. The first staff contains a large number '4'. The second staff begins with a circled 'F' and contains a series of notes and rests. The third staff features a melodic line with slurs and accents. The fourth staff includes a large '4' and some crossed-out notes. The fifth and sixth staves continue the melodic development with various rhythmic values and slurs. The seventh staff concludes with a double bar line and a circled '4'.

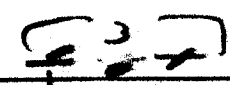
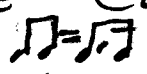
Four empty musical staves, each consisting of five horizontal lines, provided for additional notation.

THE CONTINENTAL - TPT 3  
Pg 2

TRUMPET 4

MED-SWING

THE CONTINENTAL



NR

Handwritten musical notation for the first system, including a treble clef, key signature of three sharps (F#, C#, G#), and a series of notes with slurs and accents.

MUTES IN

Handwritten musical notation for the second system, featuring a treble clef, a 4/4 time signature, and a whole rest.

Handwritten musical notation for the third system, featuring a treble clef, a 4/4 time signature, and a series of eighth notes with accents.

Handwritten musical notation for the fourth system, featuring a treble clef, a 4/4 time signature, and a whole rest.

Handwritten musical notation for the fifth system, featuring a treble clef, a 4/4 time signature, and a series of eighth notes with accents.

MUTES OUT

Handwritten musical notation for the sixth system, featuring a treble clef, a 4/4 time signature, and a whole rest.

Handwritten musical notation for the seventh system, featuring a treble clef, a 4/4 time signature, and a whole rest.

Handwritten musical notation for the eighth system, featuring a treble clef, a 4/4 time signature, and a series of eighth notes with accents. Includes the handwritten note "KEY!!" on the right.

G' CONCERT

Handwritten musical notation for the ninth system, featuring a treble clef, a 4/4 time signature, and a series of notes with slurs and accents.

Handwritten musical notation for the tenth system, featuring a treble clef, a 4/4 time signature, and a whole rest.

Handwritten musical notation for the eleventh system, featuring a treble clef, a 4/4 time signature, and a series of eighth notes with accents.

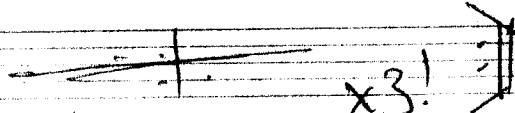
THE CONTINENTAL - TPT 4  
Pg. 2

CHORDS

THE CONTINENTAL

Med SWING

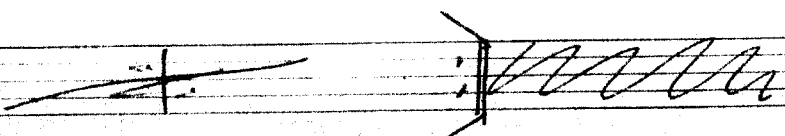
INTRO play 2

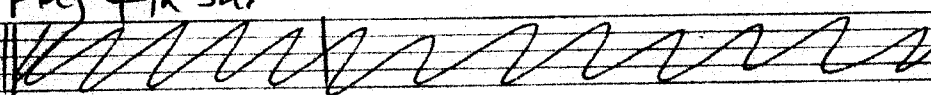
D6, Bm7, Em7, A13, |  x3!

A+B

Em7, A7, | D6

Em7, A7, | D6, Bm7, Em7, Eb9, | D6, Bm7,

Em7, A13, | 

2. D6, A57b9,  play 4 in bar

B

Gm7, C7, F6, D7#9

Gm7, C7, Em9, A13

D

Em9, A13, D6, Bm7, Em7, A13, D6

Em9, A13, D6, Bm7, Em9, Eb9, D6, A57b9

E KEY CHANGE

G6, | . | . | .

G6, E7#9, Am7, D9

Am7, | . | . | .

F

|: | D9 | G6 | Am7, D9, |

F

G6 | F9 | 3 B0, | E7#9 |

Am7, Bm6, | Am7 | 7. | D9 |

G6 | 7. | 7. | 7. |

Am7 | A5o | ~~\_\_\_\_\_~~ |

Am7 | D9 || ~~\_\_\_\_\_~~ ||

play 2 in bar

G5, E7#9, | Am7, D7#9, | Bm7, E7#9, | Am7, D7#9, |

G5 3 G5 |

\_\_\_\_\_

\_\_\_\_\_

\_\_\_\_\_

\_\_\_\_\_

\_\_\_\_\_



DRUMS

THE CONTINENTAL

Med Swing

INTRO Hi Hat

play 12

(A) + (B) Hi Hat

play 18

19 Ride (open up)

(C)

play 8

(D)

play 8

(E) Buildup (hit 2+4)

play 20

mf

(F)

play 9

bring it down!

x4

light cymbals

DRUMS

INTRO

MED SWING 2/4

THE CONTINENTAL

1

Alto 1

Alto 2

Ten 1

Ten 2

Bari

Trp 1

Trp 2

Trp 3

Trp 4

Trm 1

Trm 2

Trm 3

Pno

Gr

Bass

Drum

The image shows a handwritten musical score for the piece 'The Continental'. The score is written on a grid of 12 staves. The instruments are listed on the left side of the staves: Alto 1, Alto 2, Ten 1, Ten 2, Bari, Trp 1, Trp 2, Trp 3, Trp 4, Trm 1, Trm 2, Trm 3, Pno, Gr, Bass, and Drum. The notation includes various musical symbols such as notes, rests, and dynamic markings. The score is written in a style that is characteristic of a working draft or a composer's sketch.

THE CONTINENTAL

(A)

Alto 1

Alto 2

Ten 1

Ten 2

Bari

TH 1

TH 2

TH 3

TH 4

Trom 1

Trom 2

Trom 3

Pno

Gtr

Bass

Drum

THE CONTINENTAL

3

Handwritten musical score for 'THE CONTINENTAL'. The score is arranged in a standard orchestral layout with staves for various instruments. The instruments listed on the left are: Alto 1, Alto 2, Ten 1, Ten 2, Bari, Trp 1, Trp 2, Trp 3, Trp 4, Trm 1, Trm 2, Trm 3, Pno, Gtr, Bass, and Drms. The notation includes notes, rests, and dynamic markings such as 'p' (piano) and 'f' (forte). A section marked with a circled 'B' is visible in the upper right area of the score.

THE CONTINENTAL

(4)

Alto 1  
Alto 2  
Ten 1  
Ten 2  
Bari  
Tpt 1  
Tpt 2  
Tpt 3  
Tpt 4  
Tron 1  
Tron 2  
Tron 3  
Pno  
Gtr  
Bass  
Drum

NOTES OUT

4 in bar  
RIDE

Handwritten musical score for 'THE CONTINENTAL'. The score is written on 14 staves. The instruments are: Alto 1, Alto 2, Ten 1, Ten 2, Bari, Tpt 1, Tpt 2, Tpt 3, Tpt 4, Tron 1, Tron 2, Tron 3, Pno, Gtr, Bass, and Drum. The notation includes notes, rests, and dynamic markings. There are handwritten annotations: 'NOTES OUT' under the Tpt 1 staff, '4 in bar' under the Bass staff, and 'RIDE' under the Drum staff. A circled number '4' is written in the top right corner.

THE CONTINENTAL

5

D

Alto 1

Alto 2

Ten 1

Ten 2

Bari

Tr 1

Tr 2

Tr 3

Tr 4

Tom 1

Tom 2

Tom 3

Pno

Gtr

Bass

Drum

6

THE CONTINENTAL

KEY OF G

Handwritten musical score for 'THE CONTINENTAL' in the key of G. The score is arranged in a standard orchestral layout with the following parts from top to bottom:

- Alto 1**: Melodic line with eighth and sixteenth notes.
- Alto 2**: Similar melodic line to Alto 1.
- Ten 1**: Melodic line with eighth notes.
- Ten 2**: Melodic line with eighth notes.
- Bari**: Melodic line with eighth notes.
- Trp 1**: Melodic line with eighth notes.
- Trp 2**: Melodic line with eighth notes.
- Trp 3**: Melodic line with eighth notes.
- Trp 4**: Melodic line with eighth notes.
- Trom 1**: Melodic line with eighth notes.
- Trom 2**: Melodic line with eighth notes.
- Trom 3**: Melodic line with eighth notes.
- Pno**: Piano accompaniment with chords and arpeggios.
- Gtr**: Guitar accompaniment with chords and arpeggios.
- Bass**: Bass line with eighth notes.
- Drum**: Drum set accompaniment with various rhythmic patterns.

The score includes various musical notations such as stems, beams, and slurs. There are some handwritten annotations and corrections throughout the piece.

THE CONTINENTAL

7

Handwritten musical score for 'The Continental'. The score is arranged in a standard orchestral layout with the following parts from top to bottom:

- Alto 1
- Alto 2
- Ten 1
- Ten 2
- Bari
- Trt 1
- Trt 2
- Trt 3
- Trt 4
- Trom 1
- Trom 2
- Trom 3
- Pno
- Gtr
- Bass
- Drums

The score includes various musical notations such as notes, rests, and dynamic markings. The guitar part includes chord diagrams for F#m and D9. The drums part shows a complex rhythmic pattern.



THE CONTINENTAL

F

Handwritten musical score for 'THE CONTINENTAL' in F major. The score is arranged in a grand staff format with the following parts from top to bottom:

- Alto 1**: Treble clef, 2/4 time signature. Contains a melodic line with notes and rests.
- Alto 2**: Treble clef, contains a similar melodic line.
- Ten 1**: Treble clef, contains a melodic line.
- Ten 2**: Treble clef, contains a melodic line.
- Bari**: Bass clef, contains a melodic line.
- TH 1**: Treble clef, contains a melodic line.
- TH 2**: Treble clef, contains a melodic line.
- TH 3**: Treble clef, contains a melodic line.
- TH 4**: Treble clef, contains a melodic line.
- Tom 1**: Bass clef, contains a melodic line.
- Tom 2**: Bass clef, contains a melodic line.
- Tom 3**: Bass clef, contains a melodic line.
- Pno**: Treble clef, contains a melodic line.
- Gtr**: Treble clef, contains a melodic line.
- Bass**: Bass clef, contains a melodic line.
- Drum**: Bass clef, contains a melodic line.

The score includes various musical notations such as notes, rests, and dynamic markings. There are also some handwritten annotations and a circled '8' in the top right corner.

THE CONTINENTAL.

9

Alto 1  
Alto 2  
Ten 1  
Ten 2  
Bari  
Tr 1  
Tr 2  
Tr 3  
Tr 4  
Trom 1  
Trom 2  
Trom 3  
Pno  
Gtr  
Bass  
Drums

The image shows a handwritten musical score for the piece 'THE CONTINENTAL'. The score is arranged in a system of 14 staves. The instruments listed on the left are: Alto 1, Alto 2, Ten 1, Ten 2, Bari, Tr 1, Tr 2, Tr 3, Tr 4, Trom 1, Trom 2, Trom 3, Pno, Gtr, Bass, and Drums. The notation includes various rhythmic values, accidentals, and dynamic markings. The score is written in a clear, legible hand.

THE CONTINENTAL

Handwritten musical score for 'THE CONTINENTAL'. The score is arranged in a standard orchestral layout with staves for various instruments. The instruments listed on the left are: Alto 1, Alto 2, Tenor 1, Tenor 2, Bari, Trp 1, Trp 2, Trp 3, Trp 4, Trom 1, Trom 2, Trom 3, Pno, Gtr, Bass, and Drums. The notation includes notes, rests, and dynamic markings. There are some scribbles and corrections in the upper sections of the score.

THE CONTINENTAL

x4

Alto 1

x4

INTRO.

A

B

12.

13.

KEY: E

Handwritten musical notation for 'The Continental'. It consists of six staves of music. The first staff is marked with a circled 'F' and a treble clef. The second staff has a treble clef and a key signature of one sharp (F#). The music is written in a simple, rhythmic style with various note values and rests. The sixth staff ends with a double bar line and the word 'fine' written below it.

A) ITS SOMETHING DARING, THE CONTINENTAL, A WAY OF DANCIN' THATS REALLY ULTRA NEW.

ITS VERY SUBTLE, THE CONTINENTAL, BECAUSE IT DOES WHAT YOU WANT IT TO DO. (IT HAS A)

B) PASSION, THE CONTINENTAL, AN INVITATION TO MOONLIGHT ROMANCE ITS QUITE THE FASHION, THE CONTINENTAL, BECAUSE YOU TELL OF YOUR LOVE WHILE YOU DANCE (YOUR)

C) LIPS WHISPER SO TENDERLY, YOUR EYES ANSWER HER SONG (TWO BODIES)

D) SWAYING, THE CONTINENTAL, AND YOU ARE SAYING JUST WHAT YOU'RE THINKING OF, SO KEEP ON DANCING, THE CONTINENTAL, FOR ITS THE SONG OF ROMANCE AND OF LOVE

E) YOU KISS, KISS, KISS, WHILE YOUR DANCING, THE CONTINENTAL, THE CONTINENTAL, YOU SING, HOW YOU SING WHILE YOU'RE DANCIN' THE CONTINENTAL, THE CONTINENTAL (YOU'LL)



[F] KNOW BEFORE THE DANCE IS THROUGH, THAT YOU'RE IN  
LOVE WITH HER, SHE'S IN LOVE WITH YOU, YOU'LL FIND  
THAT WHILE YOU'RE DANCING, THERES A RHYTHM IN YOUR  
HEART AND SOUL, A CERTAIN RHYTHM THAT YOU CANT  
CONTROL, YOU WILL DO THE CONTINENTAL ALL THE  
TIME.

Handwriting practice lines consisting of multiple sets of five horizontal lines.